

PRH127



FEATURES 特点

- * Excellent solderability and high heat resistance
良好的可焊性和高耐热性

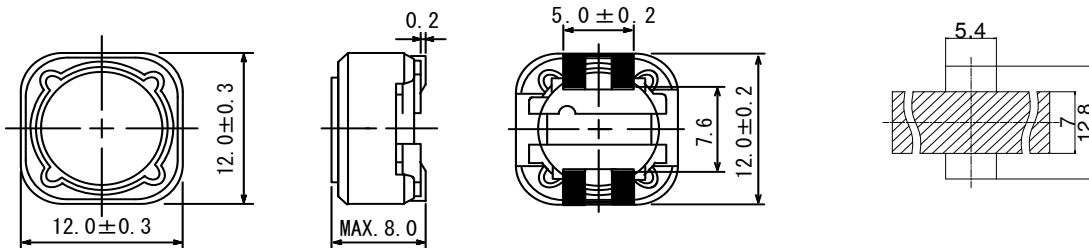
APPLICATION 用途

- * DC / DC转换器

MEASURING FREQUENCY 测试频率

- * 100KHz 0.3V

Shapes And Dimensions 外形及尺寸示意图



Electrical Characteristics 电气性能

Type 型号	Indicate 表示	Inductance 电感值	D.C.R(Max) 直流电阻(m Ω)	Rated Current(Max) 额定电流(A)
PRH127-1 R2	1R2	1.2 μ H \pm 30%	7.0(5.2)	9.80
PRH127-2 R4	2R4	2.4 μ H \pm 30%	11.5(8.5)	8.0
PRH127-3 R3	3R3	3.3 μ H \pm 30%	15.5(12.0)	7.8
PRH127-4 R7	4R7	4.7 μ H \pm 30%	15.8(11.7)	6.8
PRH127-6 R1	6R1	6.1 μ H \pm 30%	17.6(13.0)	6.6
PRH127-7 R6	7R6	7.6 μ H \pm 30%	20.0(15.0)	5.9
PRH127-10 0	100	10 μ H \pm 30%	21.6(16.0)	5.4
PRH127-12 0	120	12 μ H \pm 30%	24.3(18.0)	4.9
PRH127-15 0	150	15 μ H \pm 30%	27.0(20.0)	4.5
PRH127-18 0	180	18 μ H \pm 30%	39.2(29.0)	3.9
PRH127-22 0	220	22 μ H \pm 30%	43.2(32.0)	3.6
PRH127-27 0	270	27 μ H \pm 30%	45.9(34.0)	3.4
PRH127-33 0	330	33 μ H \pm 30%	64.8(48.0)	3.0
PRH127-39 0	390	39 μ H \pm 30%	72.9(50.0)	2.75
PRH127-47 0	470	47 μ H \pm 30%	100(76.0)	2.50
PRH127-56 0	560	56 μ H \pm 30%	110(83.0)	2.35
PRH127-68 0	680	68 μ H \pm 30%	140(100)	2.10
PRH127-82 0	820	82 μ H \pm 30%	160(120)	1.95
PRH127-10 1	101	100 μ H \pm 30%	220(170)	1.70
PRH127-12 1	121	120 μ H \pm 30%	250(180)	1.60
PRH127-15 1	151	150 μ H \pm 30%	280(210)	1.42
PRH127-18 1	181	180 μ H \pm 30%	350(260)	1.30
PRH127-22 1	221	220 μ H \pm 30%	390(290)	1.16
PRH127-27 1	271	270 μ H \pm 30%	560(420)	1.06
PRH127-33 1	331	330 μ H \pm 30%	640(470)	0.95
PRH127-39 1	391	390 μ H \pm 30%	700(520)	0.88
PRH127-47 1	471	470 μ H \pm 30%	980(730)	0.79
PRH127-56 1	561	560 μ H \pm 30%	1070(790)	0.73
PRH127-68 1	681	680 μ H \pm 30%	1460(1120)	0.67
PRH127-82 1	821	820 μ H \pm 30%	1640(1260)	0.60
PRH127-10 2	102	1.0mH \pm 30%	1820(1400)	0.55

* SPQ:400PCS/REEL

The sample parameters are based on actual measured values